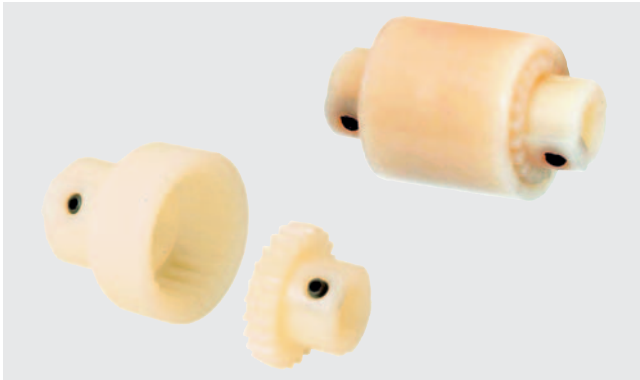


BoWex® Curved-tooth gear couplings®

Junior basic programme from nylon

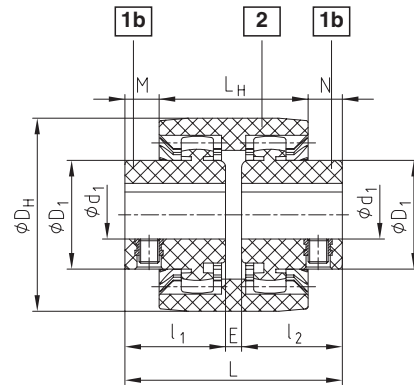
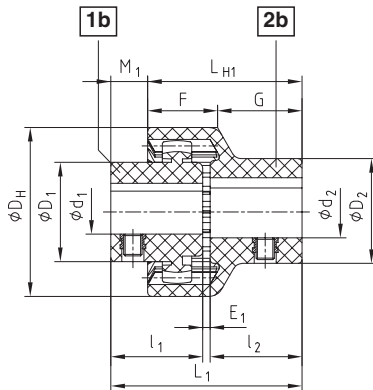
Type plug-in coupling No. 001 a. type M No. 002

Please order here:
as antriebstechnik + spannsysteme
 tel.: 0049 40 679467-0, fax: 0049 40 679467-20



- Curved-tooth gear coupling plug-in design (2 parts) from nylon
- Double cardanic curved-tooth gear coupling type M (3 parts) from nylon
- Maintenance-free due to material combination nylon
- Compensating for axial, radial and angular shaft misalignment
- Low weight and small flywheel effect
- Axial plug-in – easy assembly
- Operating range - 25 °C to + 100 °C
- Available from stock with finish bore for standard shafts including keyway to DIN 6885 sheet 1 and thread for set screws, bore tolerance + 0,05 - 0,1 keyway tolerance ± 0,08, H7 fit for steel hubs only

Components



Type junior plug-in coupling (2 parts)

Type junior M coupling (3 parts)

Size	Torque TK		Finish bores				Dimensions [mm]											Max. speed [1/min]	
			Hub, part 1b		Plug-in-sleeve part 2b		DH	li;l2	E1	L1	LH1	M1	F	G	E	L	LH		M;N
	TKN	TKmax	d1	D1	d2	D2													
BoWex® junior 14	5	10	Ø6, Ø7, Ø8, Ø9	22	Ø8	22													
BoWex® junior M-14			Ø10, Ø11	25	Ø10, Ø11	25	40	23	2	48	40	8	23	17	4	50	37	6,5	6000
BoWex® junior 19	8	16	Ø12, Ø14	27	Ø14, Ø15	29													
BoWex® junior M-19			Ø16	30	Ø19	35	48	25	2	52	42	10	23	19	4	54	37	8,5	6000
BoWex® junior 24	12	24	Ø10, Ø11, Ø12	26	Ø14, Ø16	32													
BoWex® junior M-24			Ø14, Ø15, Ø16	32	Ø18, Ø19, Ø20	36	53	26	2	54	45	9	25	20	4	56	41	7,5	6000
			Ø24	38	Ø24	40													

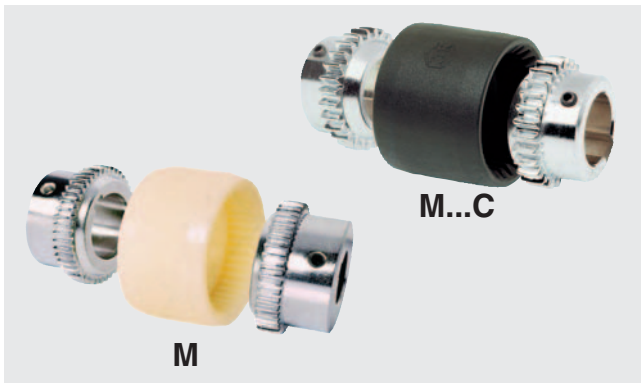
Order form:

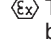
BoWex® junior 19	d1 Ø 19	d2 Ø 14
Coupling size 2-parted design or BoWex® junior M-19 3-parted design	Finish bore	Finish bore

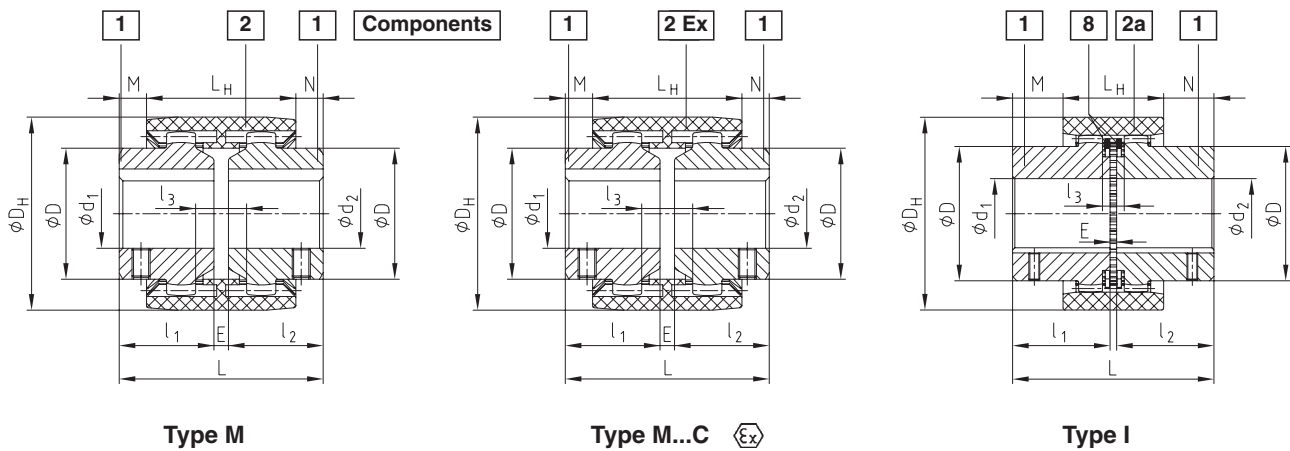
BoWex® Curved-tooth gear couplings®


Please order here:
as antriebstechnik + spannsysteme
 tel.: 0049 40 679467-0, fax: 0049 40 679467-20

Type M No. 003 / I No. 006 / M...C 



- Double cardanic curved-tooth gear coupling
- For all applications in the range of general engineering and hydraulics
- Maintenance-free due to the material combination of nylon and steel
- Compensating for axial, radial and angular shaft misalignment
- Axial plug-in - easy assembly
- Available with finish bore to ISO H7 fit, keyway to DIN 6885 sheet 1 - JS9 as well as taper and inch bores
-  Type M...C with carbon fiber reinforced PA, low backlash, higher torques and approved according to EC Standard 94/9/EC (Explosion Certificate ATEX 95)
- For finish bores available from stock see a+s stock programme on page 71
- For performance data see page 70



Size	Pilot bored 	Finish bore d1; d2	Dimensions [mm]											Weight with max. bore-Ø			Massmoment of inertia J with max. bore-Ø			
			Max.	l ₁ ; l ₂	E	L	L _H	M; N	l ₃	D	D _H	Tip circle Ø D _Z of hub	Lengthened l ₁ ; l ₂ max.	Sleeve (kg)	Hub (kg)	Total (kg)	Sleeve (kgcm ²)	Hub (kgcm ²)	Total (kgcm ²)	
M-14	M-14 C	-	15	23	4	50	37	6,5	10	25	40	33	40	0,03	0,07	0,1	0,08	0,09	0,26	
M-19	M-19C	-	20	25	4	54	37	8,5	10	32	47	39	40	0,03	0,1	0,23	0,15	0,16	0,47	
M-24	M-24C	-	24	26	4	56	41	7,5	14	36	53	45	50	0,04	0,14	0,32	0,21	0,36	0,93	
M-28	M-28C	-	Finish bores see KTR stock programme	28	40	4	84	46	19	13	44	65	54	0,08	0,33	0,74	0,65	1,22	3,09	
M-32	M-32C	-		32	40	4	84	48	18	13	50	75	63	55	0,09	0,43	0,95	1,14	2,17	5,48
M-38	M-38C	-		38	40	4	84	48	18	13	58	83	69	60	0,13	0,55	1,23	1,58	3,55	8,68
M-42		-		42	42	4	88	50	19	13	65	92	78	60	0,14	0,68	1,50	2,32	5,98	14,28
M-48	M-48C	-		48	50	4	104	50	27	13	68	95	78	60	0,23	0,79	1,81	3,90	7,22	18,34
M-65	M-65C	27 70 lg.	65	55	4	114	68	23	16	96	132	110	70	0,55	1,90	4,35	21,2	31,8	84,8	
I-80		26	80	90	6	186	93	46,5	20	124	175	145	-	1,13	5,20	11,53	68,9	150,8	370,5	
I-100		35	100	110	8	228	102	63	22	152	210	176	-	1,78	9,37	20,52	158,6	401,3	961,2	
I-125		45	125	140	10	290	134	78	30	192	270	225	-	3,88	19,44	42,76	562,9	1362,3	3287,5	

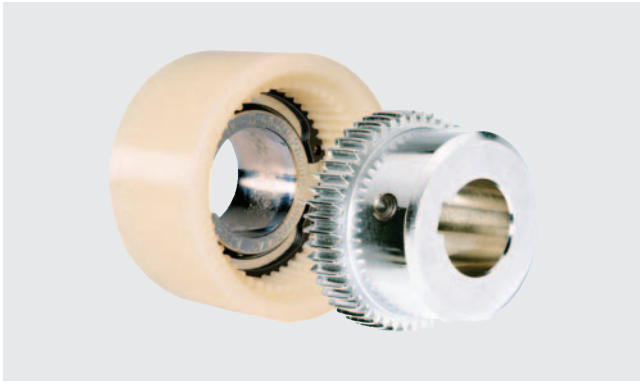
Order form:

BoWex® M-28	d ₁ Ø 20	d ₂ Ø 28
Size and type of coupling	Finish bore H7 keyway to DIN 6885 sheet 1 (JS9)	Finish bore H7 keyway to DIN 6885 sheet 1 (JS9)

BoWex® Curved-tooth gear couplings®

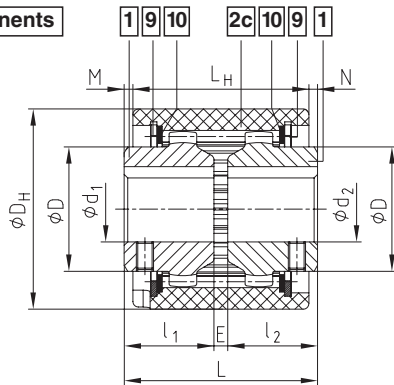
Please order here:
as antriebstechnik + spannsysteme
 tel.: 0049 40 679467-0, fax: 0049 40 679467-20

Type AS No. 004 and Spec.-I No. 005



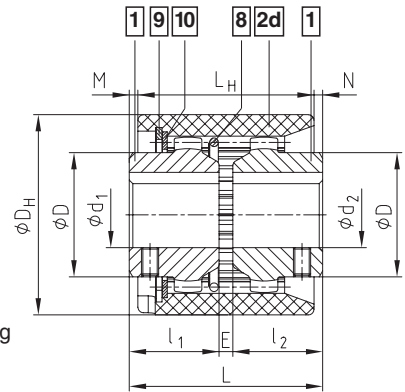
- Double cardanic curved-tooth gear coupling
- Maintenance-free due to material combination of nylon and steel
- Compensating for axial, radial and angular shaft misalignment
- Type AS – separable coupling design - axially movable sleeve when assembled
- Type Spec.-I – axial plug-in for blind assembly
- Application range from - 25 °C to + 100 °C
- Available with finish bore acc. to ISO H7 fit, keyway to DIN 6885, sheet 1 - JS9 and thread for setscrews (page 82)
- For finish bores available from stock see a+s stock programme on page 71
- For performance data see page 70

Components



Type AS

- Components 1 Hub
 Components 2c AS-sleeve
 Components 2d Spec.-I-sleeve
 Components 8 Internal snap ring
 Components 9 Circlip
 Components 10 Wearing ring



Type Spec. - I

Size	Pilot bore		Finish bore d ₁ ; d ₂	Dimensions [mm]								Weight with max. bore Ø			Mass moment of inertia J with max. bore Ø			
	Un-bored	Pilot bored		Max.	l ₁ ; l ₂	E	L	L _H	M;N	D	D _H	Leng-thened l ₁ ; l ₂ max.	Sleeve (kg)	Hub (kg)	Total (kg)	Sleeve (kgcm ²)	Hub (kgcm ²)	Total (kgcm ²)
24	x	–	Finish bores see KTR stock programm	24	26	4	56	51	2,5	36	58	50	0,11	0,14	0,39	0,38	0,36	1,10
28	x	–		28	40	4	84	56	14	44	70	55	0,16	0,33	0,82	1,54	1,22	3,98
32	x	–		32	40	4	84	58	13	50	84	55	0,21	0,43	1,07	2,75	2,17	7,09
45	x	–		45	42	4	88	60	14	65	100	60	0,27	0,63	1,53	5,49	5,66	16,81
65	x	27 70 lg.		65	55	4	114	84	15	96	140	70	0,84	2,10	5,00	29,83	43,96	117,75
80	–	25		80	90	6	186	93	46,5	124	175	–	1,30	5,20	11,70	83,20	150,8	384,8
100	–	35		100	110	8	228	102	63	152	210	–	2,05	9,40	20,80	184,4	401,3	987,0
125	–	45		125	140	10	290	134	78	192	270	–	4,32	19,44	43,10	620,0	1362,3	3344,6

Order form:

BoWex® 32 AS	d ₁ Ø 32	d ₂ Ø 32
Size and type of coupling AS or Spec.-I	Finish bore H7 keyway to DIN 6885 sheet 1 (JS9)	Finish bore H7 keyway to DIN 6885 sheet 1 (JS9)